



Charnières et pièces de fixation

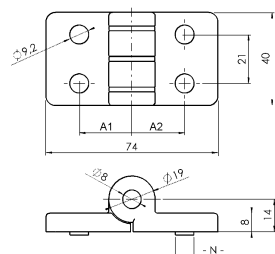
- ↳ Charnières en métal
- ↳ Charnières en zinc injecté 40 et 45
- ↳ Non-démontable

Hinges and Fittings

- ↳ Metal Hinges
- ↳ Die-cast Zinc Combi Hinge 40 and 45
- ↳ Non-detachable

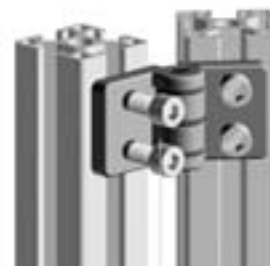
Charnières en zinc injecté 40 et 45

Non-démontable



Die-cast Zinc Combi Hinge 40 and 45

Non-detachable



Application Application

- Désignation** Raccordement des panneaux ou des profilés aluminium
- Matériau** Ailes: Zinc injecté
Axe: Acier inoxydable
- Surface** Peinture époxy noire (autre revêtement sur demande)
- Charge maxi.** 250 Nm
- Fixation** Par l'avant, avec des vis M8
- Conditionnement** 1 pièce

- Description** To connect panels or aluminum profiles
- Material** Wings: Die-cast zinc
Bolt: Stainless steel
- Surface** Black powder coated (other Surfaces on request)
- Max. Load** 250 Nm
- Fastening** From the front, using M8 screws
- Pack Quantity** 1 piece

Charnière Hinge	Ergot N Locating Pins N	A1 [mm] A1 [mm]	A2 [mm] A2 [mm]	Poids [g] Weight [g]	Pièce N° Part N°
40/40 40/40	sans without	22.5	22.5	189.0	FA-095Z4040F00S
	rainure 8 slot 8	22.5	22.5	189.0	FA-095Z4040F08S
	rainure 10 slot 10	22.5	22.5	189.0	FA-095Z4040F10S
40/45 40/45	sans without	22.5	25.0	189.0	FA-095Z4045F00S
	rainure 8 slot 8	22.5	25.0	189.0	FA-095Z4045F08S
	rainure 10 slot 10	22.5	25.0	189.0	FA-095Z4045F10S
45/45 45/45	sans without	25.0	25.0	189.0	FA-095Z4545F00S
	rainure 8 slot 8	25.0	25.0	189.0	FA-095Z4545F08S
	rainure 10 slot 10	25.0	25.0	189.0	FA-095Z4545F10S